

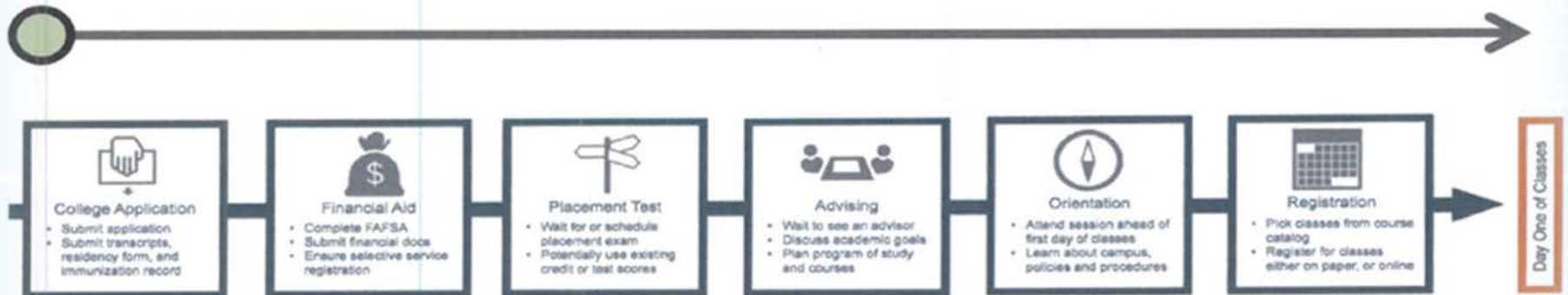
# GUIDED PATHWAYS SERVICES (GPS)



# Our Perspective of the Student Experience ...?

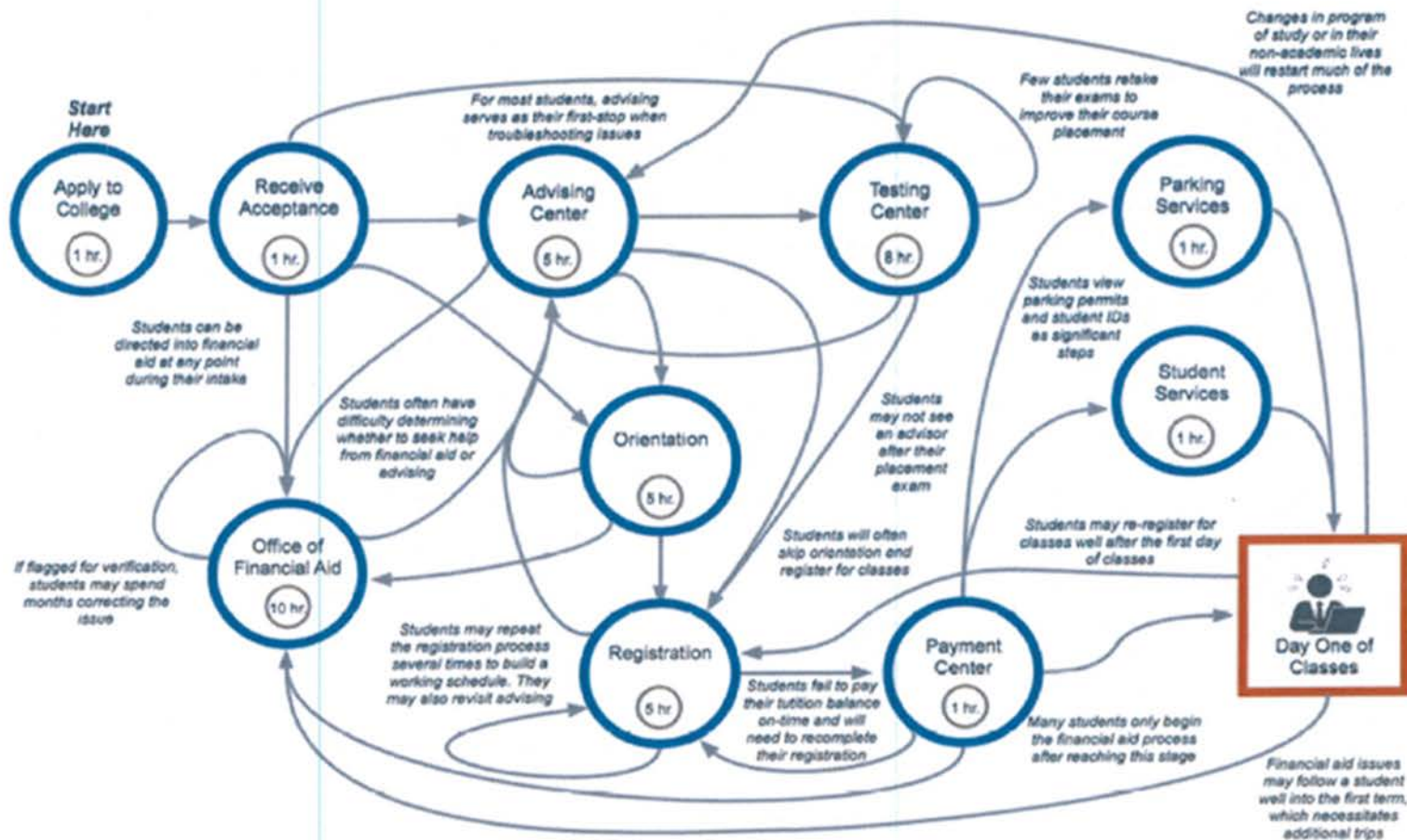
Potential First  
Time Student

Successful  
Completion



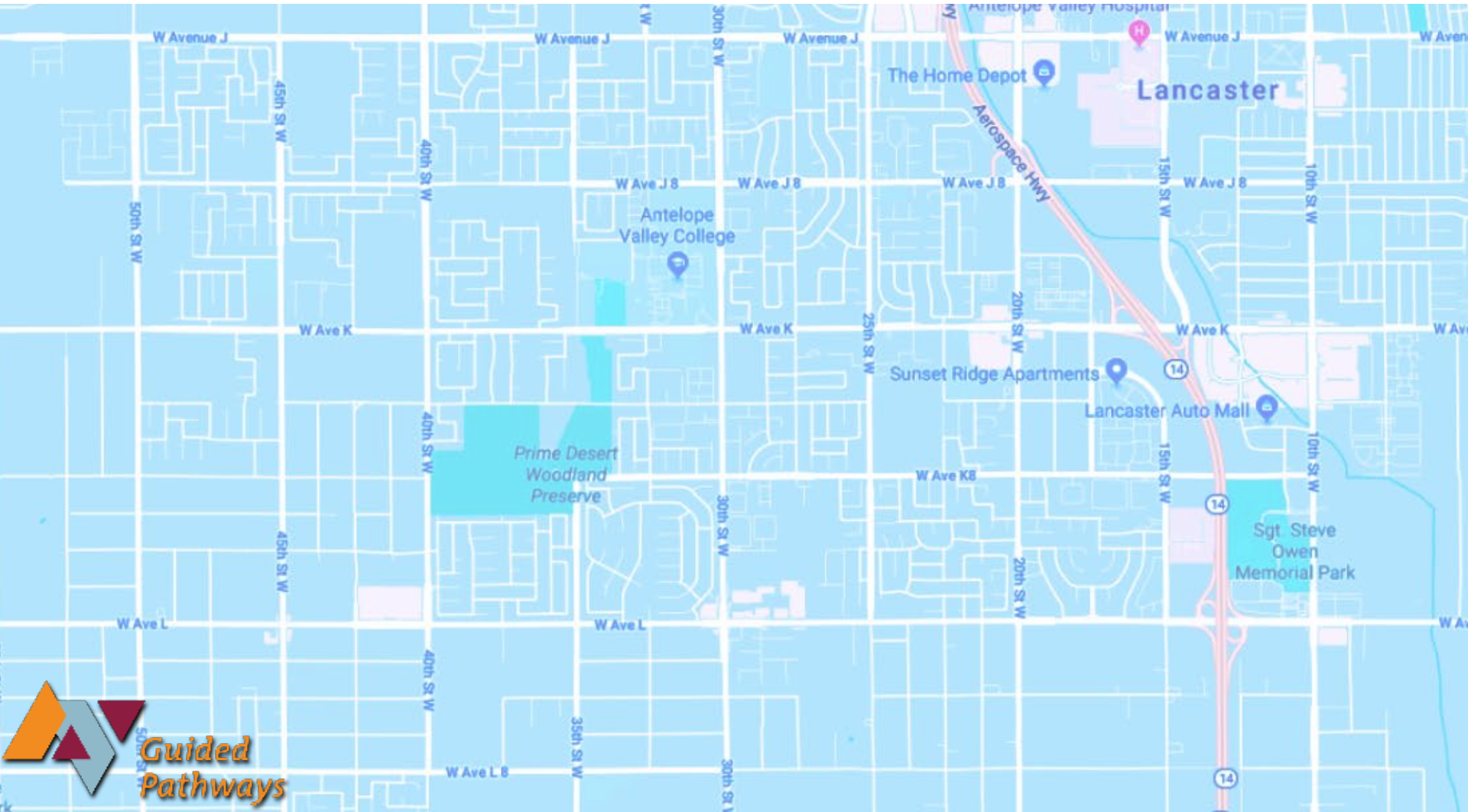
Source: Education Advisory Board, Community College Forum 2014

# Students' Perspective



# EXPLAINING GUIDED PATHWAYS

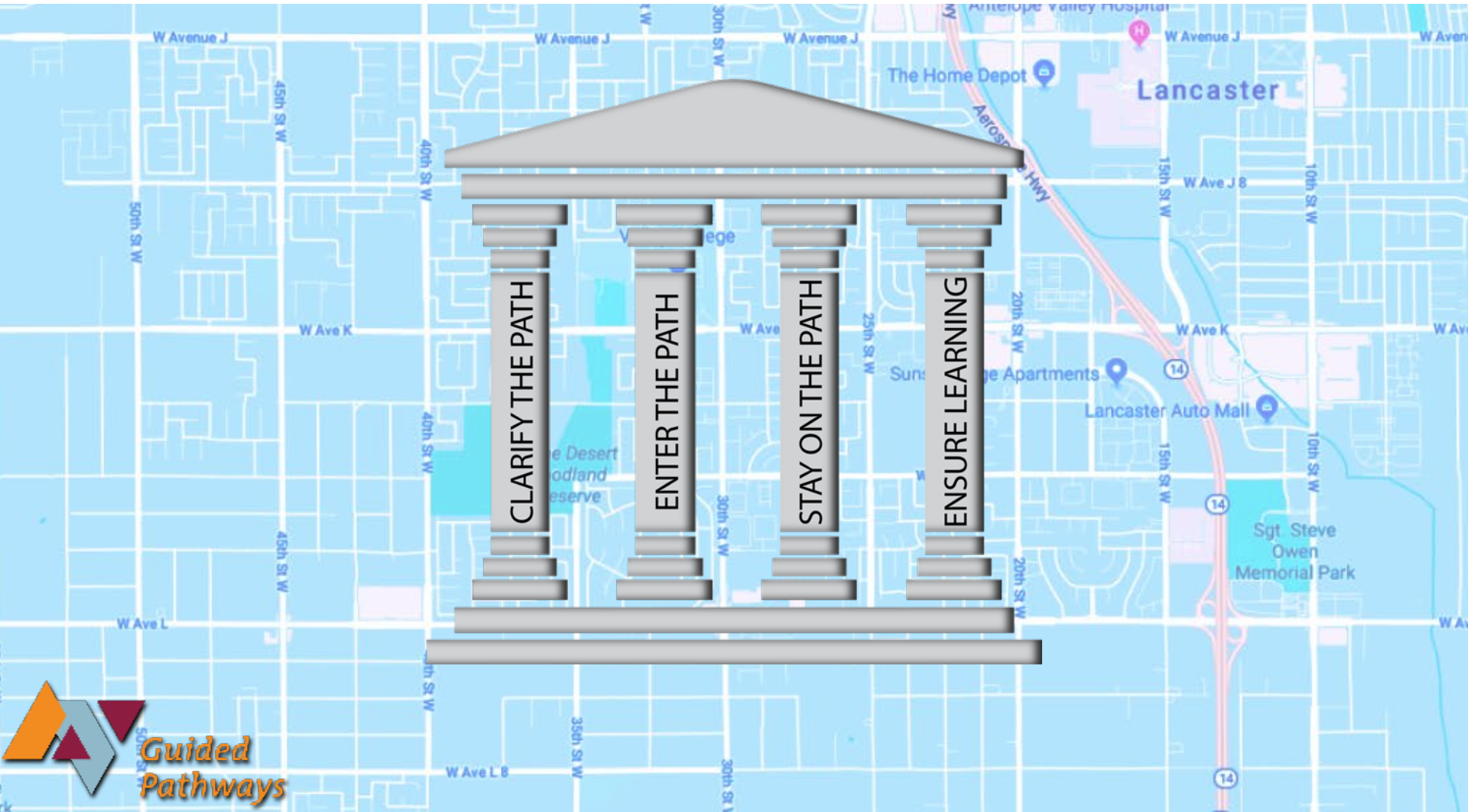
[HTTPS://WWW.YOUTUBE.COM/WATCH?V=SPTZYRVDILU](https://www.youtube.com/watch?v=SPTZYRVDILU)



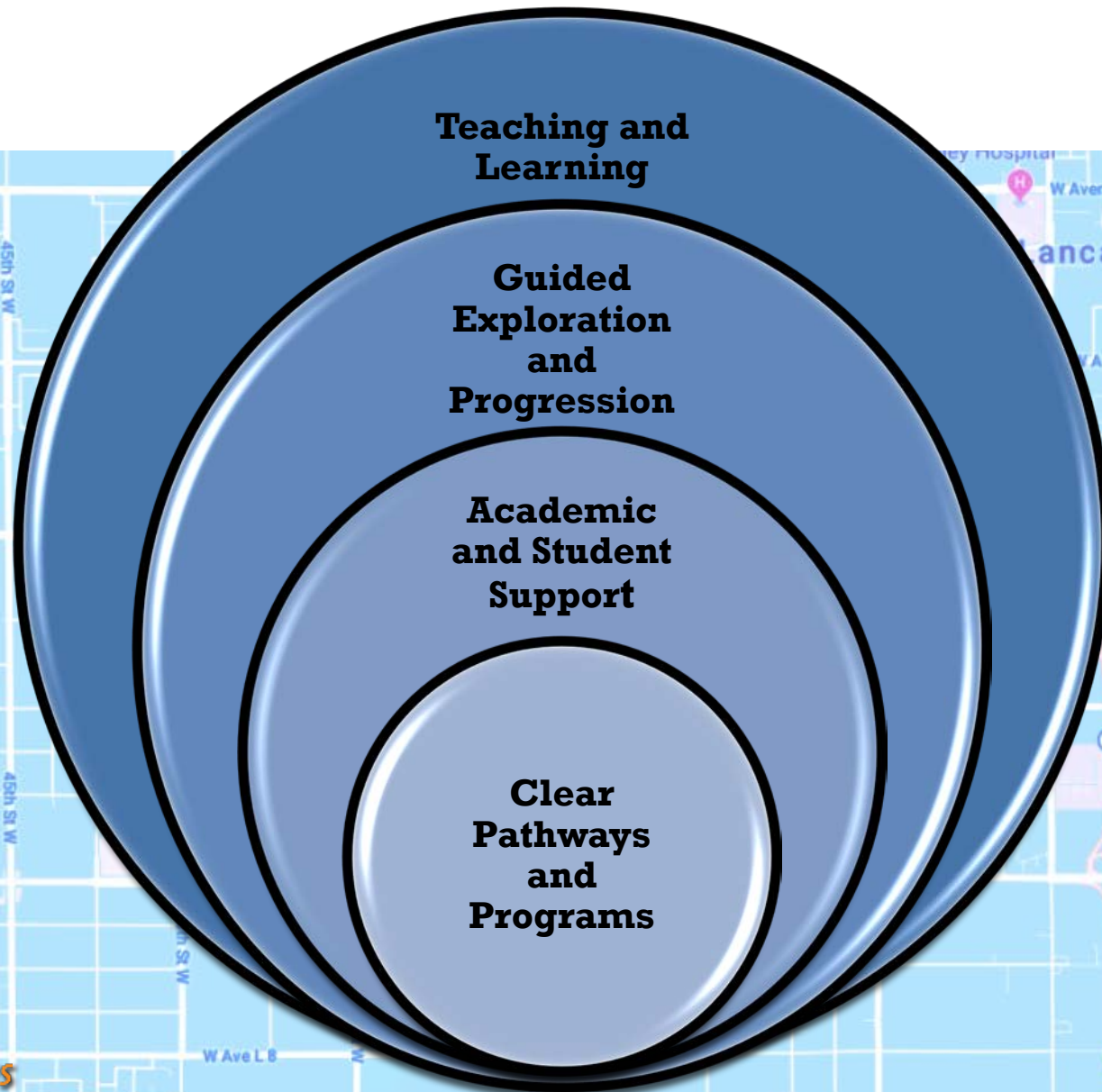
# WHAT IS GUIDED PATHWAYS?

- **An integrated, institution wide approach** to student success.
- **A student-centered approach** that can dramatically increase the number of students earning community college credentials, while closing equity gaps.
- **Provides students with clear, educationally coherent program maps** that include specific course sequences, progress milestones, and program learning outcomes.

# FOUR PILLARS OF GUIDED PATHWAYS



# Pillars Re-imagined



# THE FACULTY AND GUIDED PATHWAYS

- Curriculum
- Educational Programs
- Degree and Certificate Requirements
- Student Preparation and Success

**Clear pathways and programs**

**Guided Exploration and Progress**

- Curriculum
- Student Preparation and Success
- Educational Programs

**Teaching and Learning**

**Academic and Student Support**

- Curriculum
- Student Preparation and Success
- Educational Programs

- Curriculum
- Student Preparation and Success



# **META-MAJORS**

## **BROAD DEFINITION AND PURPOSE**

**Meta-majors are designed to get students on a pathway quickly. They create sets of courses that fulfill academic requirements for a broad discipline or program grouping such as STEM, business, or health sciences.**

**Meta-majors are a lever to help provide a foundation for undecided students' decision-making process.**

**They are designed to guide students through the completion of their early academic requirements within their specified broad program area.**

**Examples of Meta-majors in Community Colleges:**

**Indian Rivers State College**

**Valencia College**

**Skyline CC**

**General overview and approach from other colleges**

**“What We Know about GP”**

**Cuesta College**

# GPS AT AVC

**AVC Guided Pathways Services (GPS)**



# INITIAL TEAM MEETS DURING SPRING 2017

**Andrea Sanders**  
**Bonnie Suderman**  
**Cathy Hart**  
**Christos Valiotis**  
**Cole McCandless**  
**Deborah Sullivan-Ford**  
**Diana Keelen**  
**Les Uhazy**  
**Jessica Eaton**  
**Duane Rumsey**  
**Elizabeth Sundberg**  
**Erin Vines**  
**Gary Roggenstein**  
**Glenn Haller**  
**Greg Bormann**  
**Heidi Williams**  
**Irit Gat**  
**Jane Bowers**  
**Jeff Stephens**

**Jill Zimmerman**  
**Katherine Quesada**  
**Kenneth Shafer**  
**Laureano Flores**  
**Lisa Karlstein**  
**Louis O'Neil**  
**Luis Echeverria**  
**Maria Clinton**  
**Mark Hoffer**  
**Michelle Arvizu Garcia**  
**Michelle Hernandez**  
**Nathan Dillon**  
**Rick Motawakel**  
**Riley Dwyer**  
**Stacey Adams**  
**Susan Lowry**  
**Svetlana Desplazes**  
**Thomas Graves**  
**Tooraj Gordi**  
**Van Rider**  
**Wendy Dumas**  
**Zia Nisani**

# **“LEADERSHIP” SUB COMMITTEE**

**Audrey Moore  
Bonnie Suderman  
Duane Rumsey  
Greg Borman  
Harish Rao  
Irit Gat  
Jessica Eaton**

**Jill Zimmerman  
Michelle Arvizu  
Garcia  
Nate Dillon  
Riley Dwyer  
Svetlana Desplazes  
Van Rider**

# WHAT WE SAID WE WOULD DO THIS YEAR

Current plans for GPS at AVC

# 1 - CROSS FUNCTIONAL INQUIRY

1. **Develop input-gathering instruments to capture information from various constituent groups.**
2. **Integrate the data into current processes, plans, and/or goals.**
3. **Provide mechanisms to pull and share data on a regular basis.**

## 2 - SHARED METRICS

1. **Monitor the system-level Simplified Metrics development progress**
2. **Continue looking at Guided Pathways Key Performance Indicators to align Guided Pathways metrics with Equity, SSSP, Basic Skills, and other data collected**
3. **Continue reviewing key benchmarks and progress**

# 3 - INTEGRATED PLANNING

1. Identification of key stakeholders and begin early stage discussions regarding Guided Pathways
2. Identification of existing campus initiatives and programs as well as the ways in which they can be leveraged to support an overarching Guided Pathways structure/method of planning and resource allocation



# 4 - INCLUSIVE DECISION-MAKING STRUCTURES

1. Identification of key stakeholders and begin early-stage discussions regarding Guided Pathways
2. Form specific committees focused on Guided Pathways

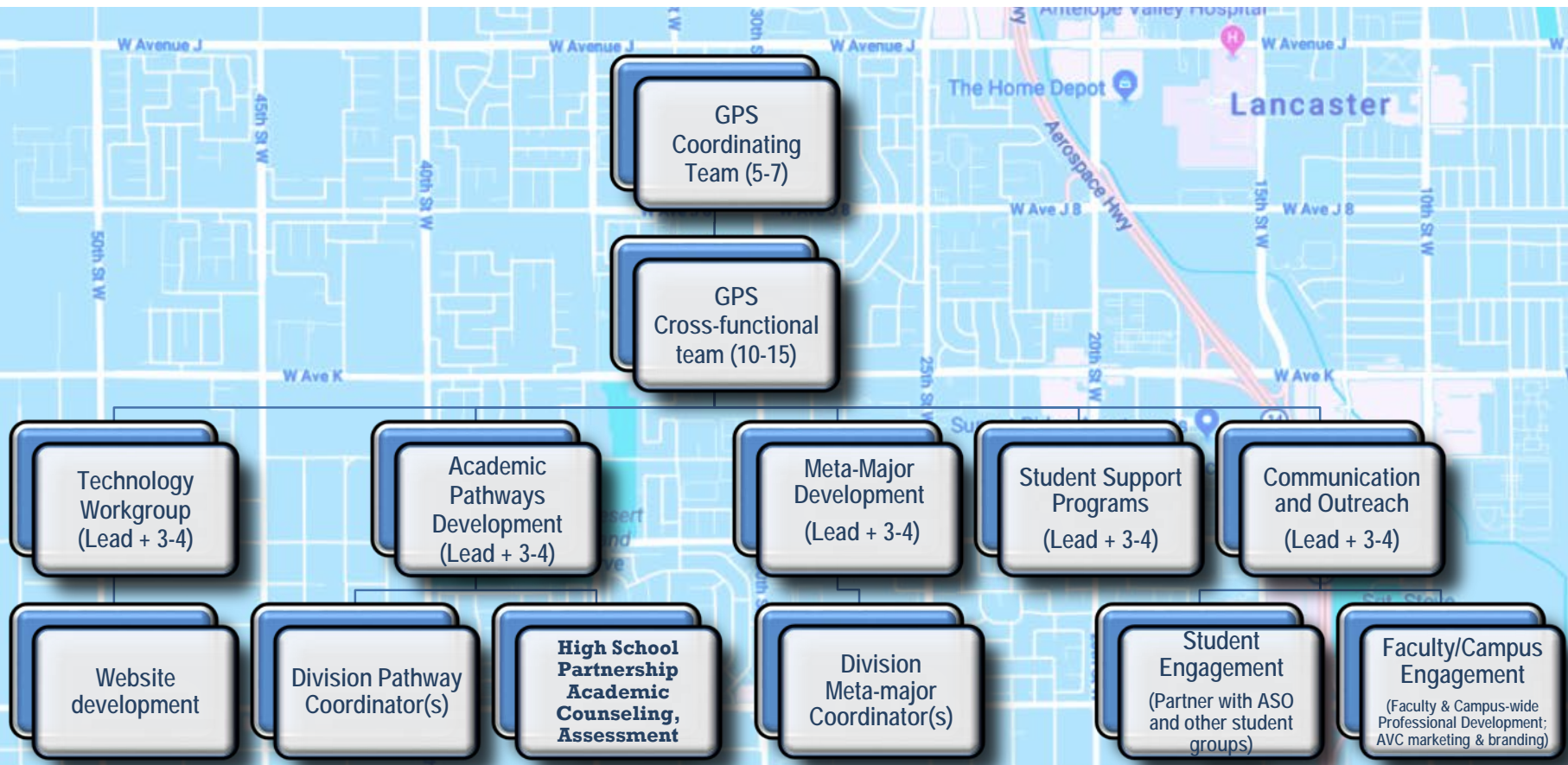
# 7- IMPROVED BASIC SKILLS

1. **The use of high school performance for placement**
2. **Co-requisite remediation, academic support, or shortening of developmental sequences[s]**
3. **Curricular innovations including the creation of math pathways to align with students' field of study**

# 9 - PROACTIVE AND INTEGRATED STUDENT SUPPORT

1. **Incorporate and enhance available student services programs that will help keep students engaged in the Guided Pathways program**
2. **Strengthen counseling support that may include embedded counselors for divisions/departments/disciplines**

# GUIDED PATHWAYS INSTITUTIONAL STRUCTURE



# GPS WEBSITE

[HTTPS://WWW.AVC.EDU/ACADEMICS/GPS/](https://www.avc.edu/academics/gps/)

